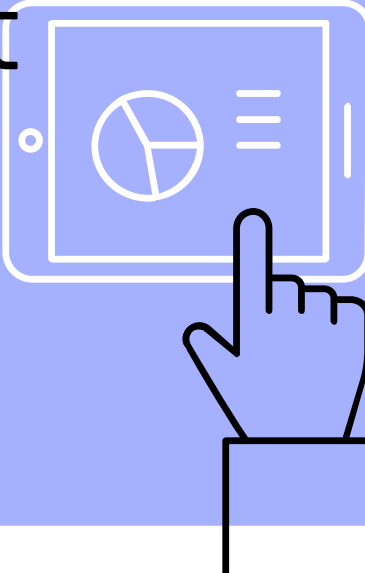
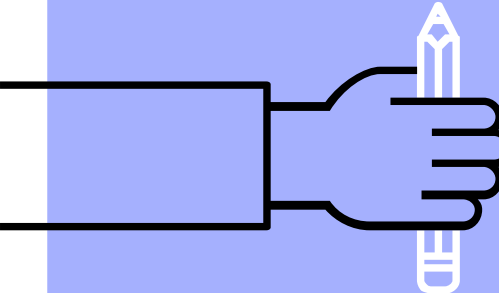


The COVID-19 Crisis: A New Year and Next Steps



Jonathan Hart, Ph.D., Superintendent of Schools
January 19, 2021 Board Of Education Meeting

Our Talking Points

Steps we have taken for a more broad re-opening.

Next steps for the current school year.

Metrics that we continue to watch.



Some Numbers

The table below illustrates the number of students who are virtual, hybrid (A/B), and in-person 4 days.

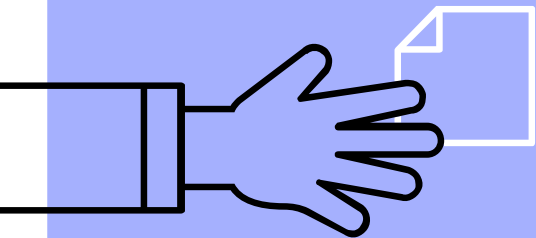
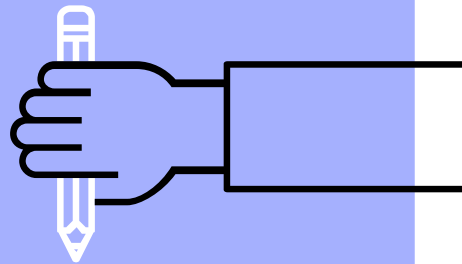
	RMS	HBS	TBS	WHS
Virtual	23%	19%	20%	25%
Hybrid	73%	71%	69%	63%
4 days	4%	10%	11%	12%

Note: Percentages are rounded



1.

What steps have
we already taken
to reopen more
fully?



Special Education Students

November 30: Students with specific IEPs returned 4 days/week.

January 4: All K-5 Resource Room students returned 4 days/week.

January 11: All K-5 In-class Resource students returned 4 days/week.

*We have been able to maintain a 6 foot distance in all classrooms.



Future Special Education Students

Investigating the following populations for the next phase:

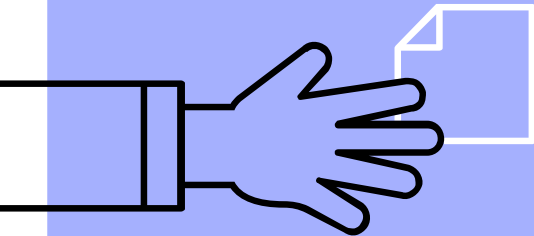
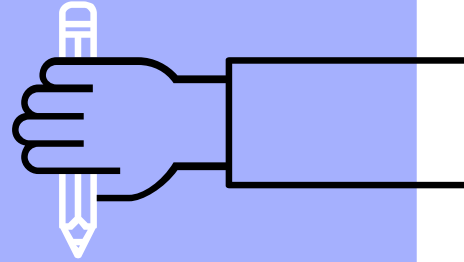
- ▶ Grades 6-8 Resource Room students*
- ▶ Grades 6-8 In-class Resource students

*When bringing back Resource Room students, the 6 foot distance becomes challenging in some cases.



2.

What are the
plans for a more
broad
reopening?



Let's Review the COVID Report

January 2, 2021

Color code: orange

The entire state is at
the orange level.



COVID-19 Activity Level Report

New Jersey Department of Health
Communicable Disease Service

Week ending January 2, 2021 (MMWR week 53)¹

COVID-19 Statewide Activity Level Timeline



■ Low
 ■ Moderate
 ■ High
 ■ Very High



Region ²	Current Activity Level
Northwest	HIGH
Northeast	HIGH
Central West	HIGH
Central East	HIGH
Southwest	HIGH
Southeast	HIGH
STATEWIDE	HIGH

COVID-19 Activity Level Index (CALI)

	Case Rate ³	Percent CLI ⁴	Percent Positivity ⁵	CALI Score ⁶
Northwest	34.15 ●	5.62 ○	11.61 ○	3
Northeast	37.31 ●	7.02 ○	12.65 ○	3
Central West	28.50 ●	5.19 ○	10.64 ○	3

What does Orange Mean?

High level of COVID activity. Made up of: case rate, percent COVID-like illness, and positivity rate.

Contact tracing and excluding any COVID-like symptoms from school.

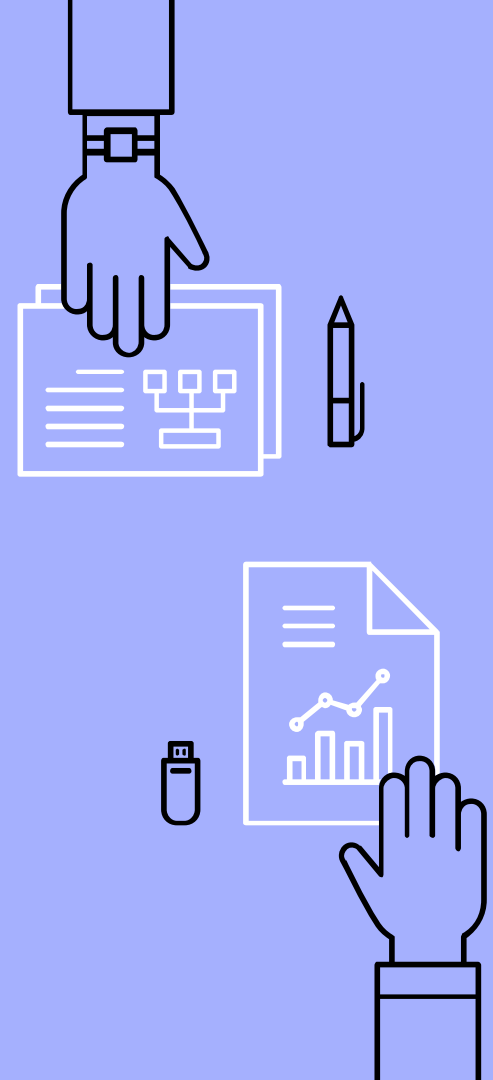


A Return to Yellow

In order to consider a more broad opening of school, the activity report must return to **yellow**. This represents a moderate COVID level.

We will no longer be contact tracing presumptive positive cases.

We **cannot anticipate** when this will occur.



Grade Priority in the Yellow Phase of Reopening

The next phase of more broad reopening will involve subphases:

Grades K-3 as subphase #1

Grades 4-5 as subphase #2

Grades 6-8 as subphase #3

This could be one grouping per week, faster or slower depending on success and COVID activity.



The Changes in the Yellow Phase

All students wishing to attend school in-person will be invited.

Students may also opt to remain fully virtual as well.

In-person learning will occur on an **early dismissal** schedule, 4 days/week to begin this phase.

Wednesdays will **remain virtual** to begin this phase.



The 6 Foot Guideline

In the yellow phase of reopening, the 6 foot guideline will **not be possible** in all classrooms. There are 2 factors that will influence this:

- ▶ Number of students who remain virtual and
- ▶ The size of the classroom

We anticipate being able to maintain **approximately 4 feet** of distance between students.

The teacher's area will remain 6 feet from the first row of students.



Summary of Yellow

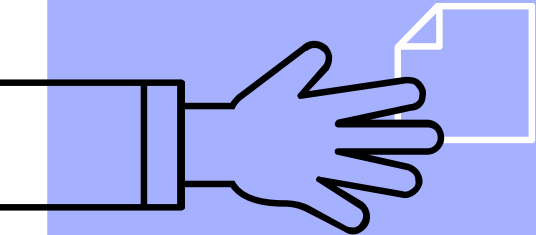
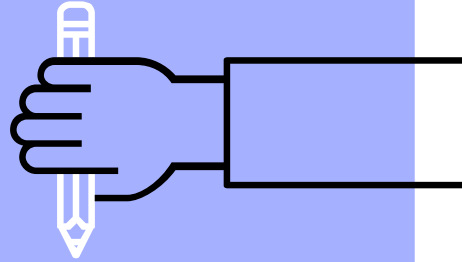
When the COVID activity report turns yellow:

- ▶ A phased approach to bringing all students back will occur
- ▶ The schedule will remain early dismissal and be monitored
- ▶ Wednesdays will be virtual and be monitored



3.

Are there more
plans if we go
green?



A Return to Green

In order to open more broadly than the yellow phase, we must return to **green** in the activity report. This represents low level of COVID activity.

We **cannot anticipate** when this will occur.



The Changes in the Green Phase

All students wishing to attend school in-person will be invited.

Students may also opt to remain fully virtual as long as the State permits.

In-person learning may occur on a **full day** schedule.

Wednesdays will become **in-person days**.



The 6 Foot Guideline

In the green phase of reopening, like the yellow phase, the 6 foot guideline will **not be possible** in all classrooms.

Additionally, we also have to consider how lunch service will operate. With masks off during lunch, we will want to consider how to maintain a 6 foot distance.



Summary of Green

When the COVID activity report turns green:

- ▶ All students wishing to be back can come for in-person learning
- ▶ Transition to full days
- ▶ Wednesdays will become in-person
- ▶ Lunch will be served



The Unknowns

Timeline for movement to Yellow and Green.

The impact of 6 foot distance or less:

- ▶ Some areas may have 6 feet
- ▶ Others may have less than 6 feet
- ▶ We must monitor the impact



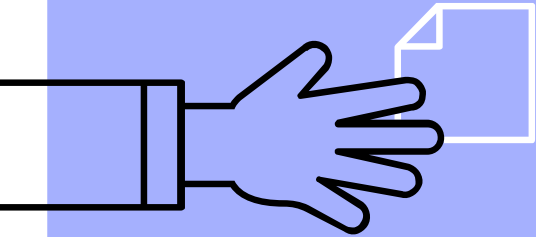
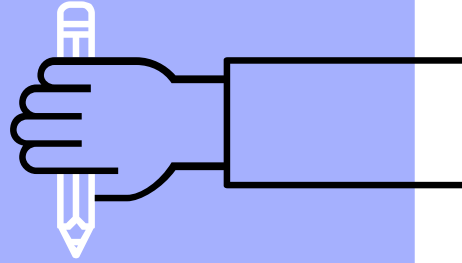
Phases in Brief

<u>Orange</u>	<u>Yellow</u>	<u>Green</u>
<p>Student Populations Prioritize special student populations, bringing back students with special needs in the following order: Grades K-5 Resource room students and in-class resource</p> <p>Grades 6-8 Resource room students and in-class resource</p> <p>Schedule Maintain a hybrid schedule A/B days Maintain an early dismissal schedule</p> <p>Wednesdays Wednesdays remain fully virtual.</p>	<p>Student Populations Prioritize bringing back all students who wish to return for in-person learning in the following order: Grades K-3 Grades 4-5 Grades 6-8</p> <p>Schedule There will no longer be an A/B rotation in the school. All students will attend 4 days/week. Maintain an early dismissal schedule.</p> <p>Wednesdays Wednesdays remain fully virtual. We will look to make Wednesdays an in-person day at some point during this period.</p>	<p>Student Populations All students who wish to have in-person learning will be attending in-person.</p> <p>Schedule We will transition from early dismissal days to full days of instruction with lunch service.</p> <p>Wednesdays Wednesdays will become an in-person day.</p> <p><i>*Timelines for these phases are unknown. There may also be some transitions within the phases.</i></p>



4.

Other metrics and reminders



Reminder of the Matrix

- ▶ Displays our response based on color code.
- ▶ Continues to be updated by the DOH.
- ▶ Provides guidance to schools.



COVID-19 Regional Risk Matrix

**For use by LHDs when providing guidance to school districts*

Low Risk	Moderate Risk	High Risk	Very High Risk
<p>Evaluate alternatives to in-person learning to ensure continuity of work or educational services.</p> <p>In response to a COVID-19 case among staff or students, follow COVID-19 exclusion criteria; work with local health department to identify and exclude close contacts following CDC guidance; refer to guidance on cleaning and disinfection.</p> <p>In response to ill students and staff, follow NJDOH School Exclusion List.</p> <p><i>* If ill person had potential exposure in past 14 days, follow COVID-19 exclusion criteria; wait at least 24 hours and clean/disinfect areas where ill person spent time.</i></p> <p>Permit limited activities involving interaction with multiple cohorts, ensuring adherence to precautions.</p>	<p>Consider a mixture of remote and/or hybrid learning approaches, and/or fully remote learning.</p> <p>In response to a COVID-19 case among staff or students, follow COVID-19 exclusion criteria; work with local health department to identify and exclude close contacts following CDC guidance; refer to guidance on cleaning and disinfection.</p> <p>In response to ill students and staff with COVID-19 compatible symptoms, follow COVID-19 exclusion criteria; wait at least 24 hours and clean/disinfect areas where ill person spent time.</p> <p>Minimize activities that involve interaction with multiple cohorts.</p>	<p>Consider implementing fully remote learning.</p> <p><i>If schools remain open for in-person learning:</i></p> <p>In response to staff or student is a COVID-19 case or who has COVID-19 compatible symptoms (not yet tested), follow COVID-19 exclusion criteria; work with local health department to identify and exclude close contacts according to CDC guidance; refer to guidance on cleaning and disinfection.</p> <p><i>* Decisions on when ill person's close contacts can return to school are dependent on the ill person's medical evaluation and COVID-19 test results.</i></p> <p>Restrict activities that involve interaction with multiple cohorts.</p>	<p style="writing-mode: vertical-rl; transform: rotate(180deg);">Implement fully remote learning</p>
<p>RISK LEVELS GREEN, YELLOW, AND ORANGE (IF OPEN FOR IN-PERSON LEARNING):</p> <ul style="list-style-type: none"> Require staff and students to stay home when sick or if they have been in close contact with someone with COVID-19 within the past 14 days. If someone in their household is being tested for COVID-19 due to illness, students/staff should also stay home until the test result is received. Parents/guardians, students and staff should notify school administrators of illness and known exposure. Have a policy for daily symptom screening for students and staff; have plans for students and staff to report symptoms that develop during the day. In conjunction with local health department, identify COVID-19 rapid testing resources (viral testing) for when staff and students develop COVID-19 compatible symptoms. Clean and disinfect frequently touched surfaces at least daily. Ensure adequate hand hygiene supplies are readily available. Implement physical distancing measures (e.g., reducing occupancy (staggered schedules, use of alternate spaces), installation of partitions/physical barriers, cancelling large gatherings/events, maintaining defined cohorts). Implement source control through wearing masks. 			
<p>ALL RISK LEVELS</p> <ul style="list-style-type: none"> Keep abreast of NJDOE and NJDOH COVID-19 guidance and surveillance indicators. Exchange after-hours contact information with your local health department. 			

Reminder of the Dashboard

Cases and Trends "Tab" shows:

Daily new cases statewide

Cases by county

Transmission rate

Cases and Trends Tab

Daily new cases



Cases by county

Daily

Transmission Rate

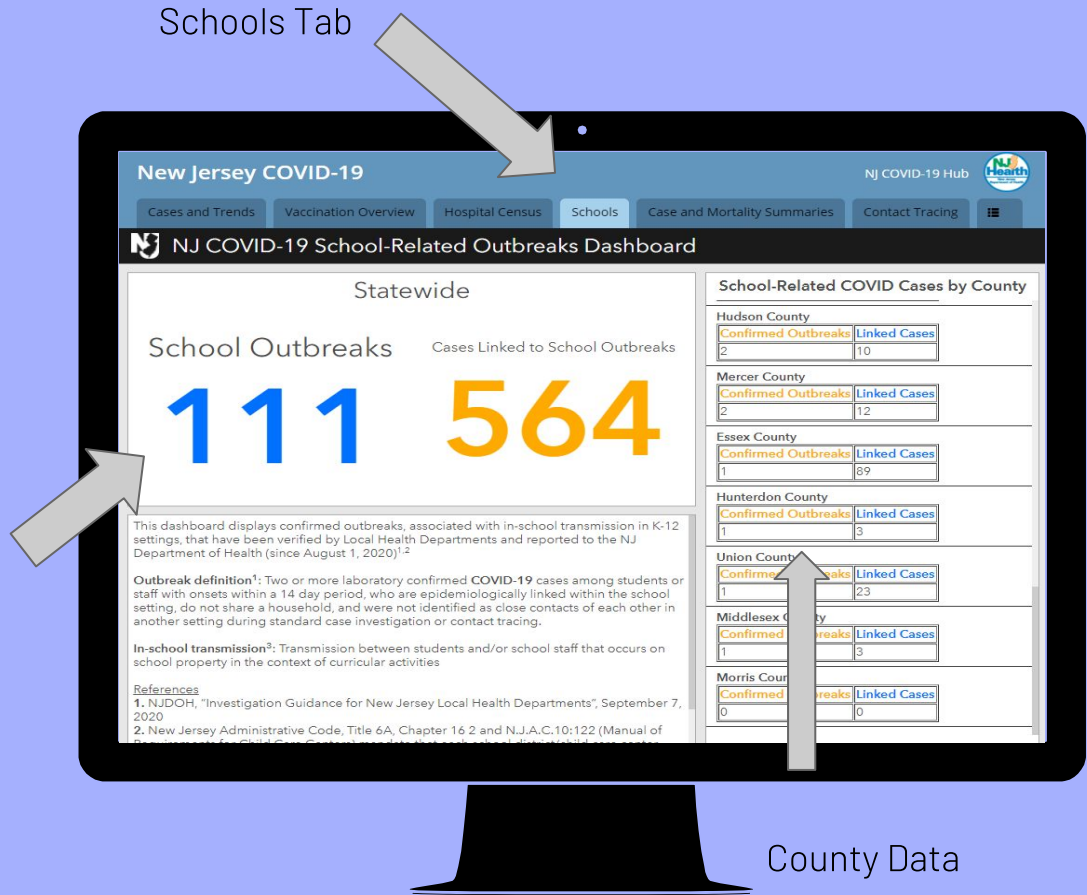
Dashboard

Schools "Tab"
shows:

School outbreaks
statewide

School outbreaks by
county

Cases linked to
schools



THANKS!

Any questions?

